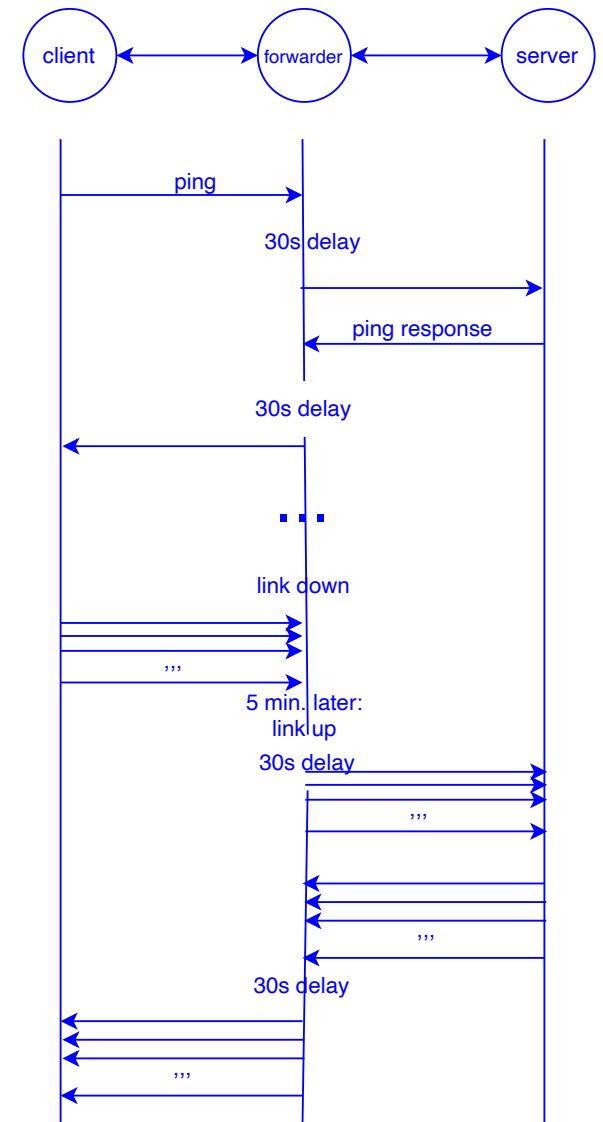


Link interruptions

- Three nodes network: Client - link - Forwarder - link - Server
- Ping
- 30 seconds delay on each outgoing interface of the forwarder => 60s RTT
- Link down for 5 minutes
 - During link down, forwarding node stores packets
- when link up, data is de-stored and forwarded (still with 60s RTT)



Link Interruptions

```
• ping -v -c 400 -W 100000 fc00:1::3
• PING fc00:1::3 (fc00:1::3) 56 data bytes
• 64 bytes from fc00:1::3: icmp_seq=1 ident=12259 ttl=62 time=60015 ms
• 64 bytes from fc00:1::3: icmp_seq=2 ident=12259 ttl=62 time=60004 ms
• 64 bytes from fc00:1::3: icmp_seq=3 ident=12259 ttl=62 time=60004 ms
• ...
• 64 bytes from fc00:1::3: icmp_seq=35 ident=12259 ttl=62 time=60004 ms
• 64 bytes from fc00:1::3: icmp_seq=36 ident=12259 ttl=62 time=60004 ms
• 64 bytes from fc00:1::3: icmp_seq=37 ident=12259 ttl=62 time=360184 ms
• 64 bytes from fc00:1::3: icmp_seq=38 ident=12259 ttl=62 time=359160 ms
• 64 bytes from fc00:1::3: icmp_seq=39 ident=12259 ttl=62 time=358137 ms
• 64 bytes from fc00:1::3: icmp_seq=40 ident=12259 ttl=62 time=357113 ms
• ...
• 64 bytes from fc00:1::3: icmp_seq=317 ident=12259 ttl=62 time=74110 ms
• 64 bytes from fc00:1::3: icmp_seq=318 ident=12259 ttl=62 time=73087 ms
• 64 bytes from fc00:1::3: icmp_seq=319 ident=12259 ttl=62 time=72065 ms
• ...
• 64 bytes from fc00:1::3: icmp_seq=398 ident=12259 ttl=62 time=60004 ms
• 64 bytes from fc00:1::3: icmp_seq=399 ident=12259 ttl=62 time=60004 ms
• 64 bytes from fc00:1::3: icmp_seq=400 ident=12259 ttl=62 time=60004 ms
• --- fc00:1::3 ping statistics ---
• 400 packets transmitted, 400 received, 0% packet loss, time 407896ms
• rtt min/avg/max/mdev = 60003.980/170727.305/360183.665/99770.604 ms, pipe 353
```

• 60 seconds RTT

• 5 minutes interruption

• link back

• Implemented forwarding policy is FIFO, so the « oldest » is forwarded first.

• After all stored packets forwarded, then the packets are forwarded directly